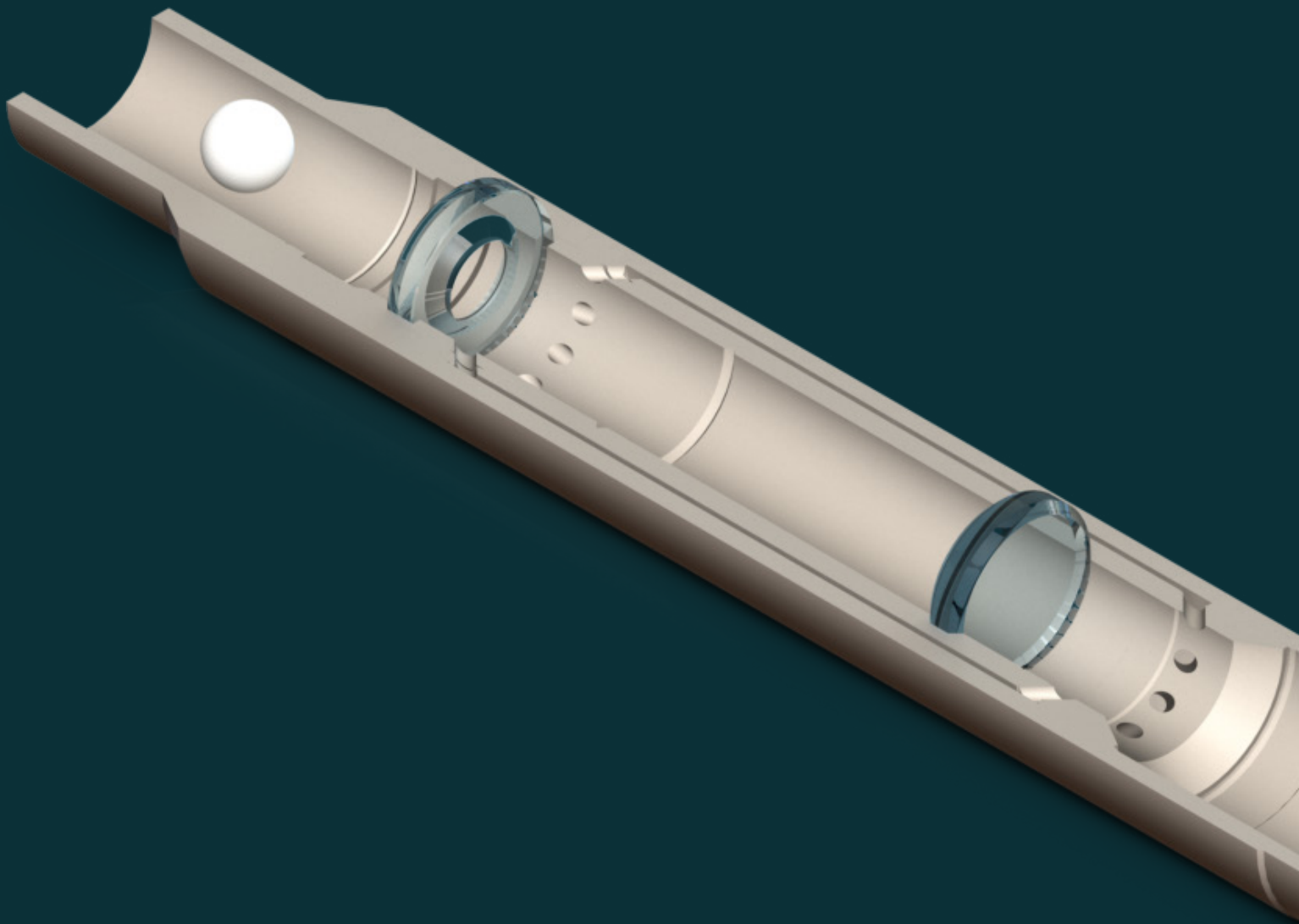


# Fantom™

## Autofill Barrier Combination



# Fantom™

## Autofill Barrier Combination



4 standard sizes



Customizable ID and OD



Easy Installation / Activation



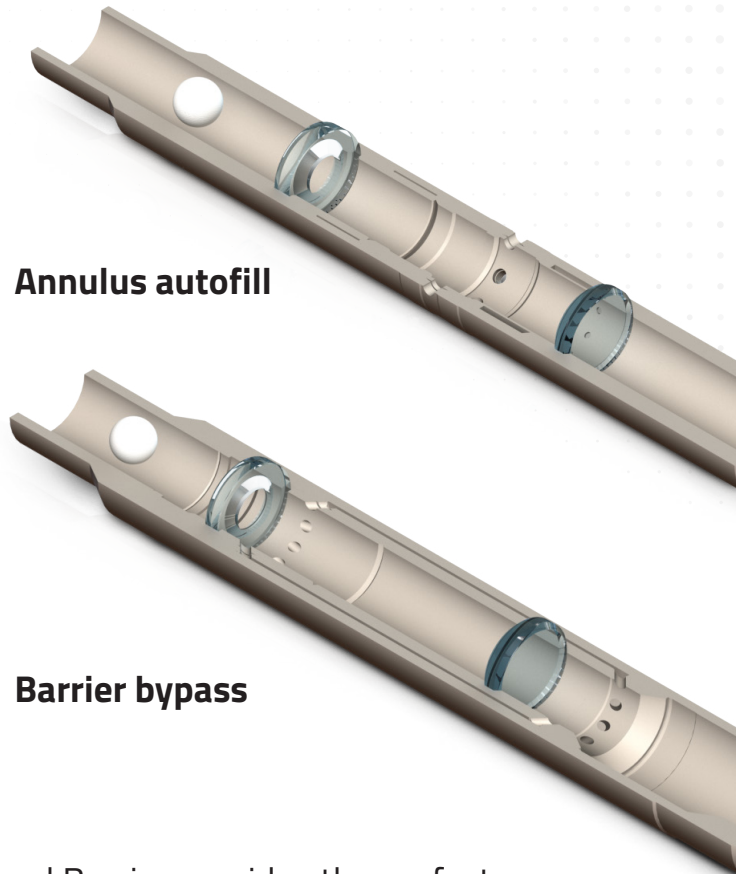
ISO/API Validated



15000 Max psi



320 Max °F



**Annulus autofill**

**Barrier bypass**

Combining the Fantom™ Shatter Ball Seat (SBS) and Barrier provides the perfect solution for autofill. To benefit from this combination, the valve is installed with the flow ports in an open position, which allows fluid from the annulus or below the plug to fill the tubing string. As a result, it improves well control during RIH and ensures a smoother deployment process.

When at depth, a ball is dropped to close the sleeve, providing upstream pressure integrity which allows effective execution of remaining completion activities.

Once these are completed, the Fantom™ SBS and Barrier are easily opened without intervention, resulting in genuine full-bore ID and a reduction in rig time. This dramatically improves efficiency while increasing safety and profitability.

Need more information?

Visit [www.entechteam.com](http://www.entechteam.com) or contact us at [sales@entechteam.com](mailto:sales@entechteam.com)